

# **MOUNTAIN SPARK GAPS**

**NPARC—The Radio Club for the  
Watchung Mountain Area**



**Website: <http://www.nparc.org>  
Club Calls: N2XJ, W2FMI  
Facebook: New Providence Amateur Radio Club  
(NPARC)**

**VOLUME 55 No. 12 Dec. 2022**

**Regular Meetings  
Second & Fourth Mondays  
1/9 & 1/23**

## **Upcoming Events**

**Digital Net Mondays at 9:00 PM  
PSK on 80 or 10 meters  
CW training Net, Thursdays at 9:00 PM**

## Meeting Schedule

**Regular Meeting: 7:30—9:00 PM**  
**2nd & 4th Monday**  
**of each month**  
Watch for Emails

**Everyone is Welcome**  
If a normal meeting night is a holiday,  
we usually meet the following night.  
Call one of the contacts below  
or check the web site

### Club Officers for 2022

President: W2PTP Paul Wolfmeyer  
201-406-6914  
Vice President: W2EMC Brian DeLuca  
973-543-2454  
Secretary: K2AL: Al Hanzl  
908-872-5021  
Treasurer: K2YG Dave Barr  
908-277-4283  
Activities: KC2OSR: Sam Sealy  
973-462-2014

### —On the Air Activities

Club Operating Frequency  
145.750 MHz FM Simplex

Sunday Night Phone Net  
Murray Hill Repeater (W2LI) at 9:00 PM  
Transmit on 147.855 MHz  
With PL tone of 141.3 Hz  
Receive on 147.255 MHz  
Net Control K2AL

Digital Net  
Mondays 9 PM  
28,084 — 28,086  
Will be using PSK and RTTY  
Net control K2YG

### Club Internet Address

Website: <http://www.nparc.org>  
Webmaster KC2WUF David Bean  
Reflector: [nparc@mailman.qth.net](mailto:nparc@mailman.qth.net)  
Contact KC2WUF, David

## MOUNTAIN SPARK GAPS

Published Monthly by NPARC, Inc.  
The Watchung Mountain Area Radio Club  
P.O. Box 813  
New Providence, NJ 07974  
©NPARC 2010 All Rights Reserved  
Editor: K2EZR Frank McAneny  
Contributing Editors:  
WB2QOQ Rick Anderson  
W2PTP Paul Wolfmeyer  
K2UI Jim Stekas

## Climatological Data for New Providence for November 2022

The following information is provided by Rick, WB2QOQ, who has been recording daily weather events at his station for the past 43 years.

### TEMPERATURE -

Maximum temperature this November, 75 deg. F  
(November 5)  
Last November (2021) maximum was 63 deg. F.  
Average Maximum temperature this November, 55.7 deg. F  
Minimum temperature this November, 21 deg. F  
(November 21)  
Last November (2021) minimum was 26 deg. F.  
Average Minimum temperature this November, 38.6 deg. F  
Minimum diurnal temperature range, 9 deg. (64 -55 deg.) 11/1; (33-24) 11/20  
Maximum diurnal temperature range, 23 deg. (74-51 deg.) 11/7; (55-32) 11/30

Average temperature this November, 47.2 deg. F  
Average temperature last November, 42.7 deg. F

### PRECIPITATION -

Total precipitation this November- 3.23" rain  
Total precipitation last November- 1.02" rain; 0.1" snow  
Maximum one day precip. event this November- November 30, 1.00" rain.  
Measurable rain fell on 10 days this November, 9 days last November.

YTD Precipitation - 42.07"

Note: Do to being hospitalized between 11/9 and 11/18, some data has been estimated, based on local reporting stations.

=====  
Rick Anderson  
12/19/2022  
243 Mountain Ave.  
New Providence, NJ  
(908) 464-8911  
[rick243@comcast.net](mailto:rick243@comcast.net)

## Prsidents Column

### Reflections on Six Years--2017-2022

So what has NPARC done and where has it gone in six years? Location changes and the pandemic have been the impediments to overcome, but **we have persevered** with meetings, programs, auctions, field days, holiday luncheons, and camaraderie...

**Auctions:** in 2017 we were at New Providence High School on a Friday evening; we moved to Saturday afternoon with solid attendance. Then a scheduling problem forced a change to Salt Brook School. We had great cooperation from the school and, after skipping a year for the pandemic, we are still there. Joe Reid K2JAO has continued as our Master Auctioneer! As usual, club members have willingly stepped up to fill the many other roles.

**Field Days:** We keep going at Governor Livingston HS, except for two years due to the pandemic. Again volunteers made set up and tear down go quite fast. I like to say I'm getting too old for this, but offering the opportunity for new and recent hams to actually get on the air is my main "driver". And we've had successes in that direction, although more is desired. We do well in results, benefitting too from bonus points. Securing the location has had its "hiccups" but we seem to be on a positive roll.

**Meetings:** We liked the NP Senior Center; it worked well with comfort and a kitchen for coffee. But, reportedly, neighbors didn't like any evening meetings there. So we moved to NP municipal space and then the pandemic hit...so it was off to ZOOM, which held us together through the pandemic. In my view, it was a great way to connect when we couldn't be together in person. Now we're at Salt Brook once a month, with a hybrid option, and ZOOM for the second meeting. Not as comfy as the Senior Center, but we can be together.

**Programs:** We had a strong variety of youtubes for a year or so with some great member programs thrown in. Where the pandemic and ZOOM actually helped us was with some of the "premier" programs that Sam KC2OSR arranged: Bob Heil, Gordon West, Tim Duffy, and Vice Admiral Scott Redd (thanks to Heather KD2VZA). So programs have been solid: thanks Sam KC2OSR!

**Other Activities:** Bringing in youth is a tough challenge. We had good Kids Days before the pandemic and a special Makers Day at the NP Library in 2019—Kevin N2TO was a "star" working with youth on Morse Code! And we tried our hand at Fox hunting in 2018.

**Holiday luncheons:** Popular with the membership—thanks to the Kerns for arranging them. We missed one year, due to the pandemic but that year we had our awards on ZOOM with even "real" awards, like ARRL handbooks.

**Club administration:** We did some cleanup of our by-laws, particularly on membership processes, and got electronic meetings into the bylaws. And we introduced budget management again.

**Membership:** We named three Honorary Life Members: Barry K2JV, Guy K2EFB (SK), and Bill W2UDT. Sadly we mourned the death of some members and former members: Jim Brown, Jon Pawlik, Andy Stillinger, Guy Brennert, and Sister Irma. We remember their friendship and contributions to. As always, our members have stepped up to help each other on operating, equipment, activities (like the auctions and field days), and just being good friends. Members: our great asset!

Well, I probably missed some things in "wrapping up" the years. We have tried to stay-the-course and adapt to the virus situation as best we could. I'd say we did pretty well.

Thanks to those who have served as officers, to K2EZR for the Spark Gaps, to KC2WUF for the website, and to all of you members!

73 and Best Wishes,

Paul Wolfmeyer W2PTP [w2ptp@arrl.net](mailto:w2ptp@arrl.net) 201-404-6914

## 2022 NPARC AWARDS

Congratulations to the following members who were honored at our annual Holiday Luncheon on December 3 at the Vintage Tavern in Gillette.

### 2022 Ham of the Year

Awarded to N2TO, Kevin Glynn

Kevin has contributed his time and expertise as Station Manager for NPARC Field Day, has been active operating in the "Parks on the Air (POTA)" event and has been a mentor to youth at our Club programs.



### 2022 Wouff Hong Award

Congratulations to KC2HLA, Hillary Zaenchek, for being awarded this year's prestigious Wouff Hong Award. Hillary has served the Club as an officer, has been active in ham licensing instruction and testing events and has been a steady participant in our Field Days and other events over the years.



K2AL

## Using *fldigi* With Multiple Rigs on Raspberry Pi

Jim Stekas - K2UI

NPARC members use a wide variety of different rigs, antennas, logging programs, and computer operating systems. But when the NPARC digital net meets on Monday evenings everyone checks in using *fldigi*. Configuring a rig and *fldigi* for digital operations can be pretty frustrating, but with some help from NPARC members we all have gotten through it. Members run *fldigi* on Windows, the Raspberry Pi, or both.

Up until recently, I logged into the digital net with my IC-7300 connected to *fldigi* on the Raspberry Pi. I had *fldigi* and *flrig* icons on my desktop to start up in digital mode. When my IC-7610 arrived my goal was to get it running on *fldigi* without stepping on the IC-7300 configuration. After a bit of hacking I now have desktop *fldigi* icons for both rigs. What follows is a description of the steps to be taken to run a second rig with *fldigi* on your Raspberry Pi.

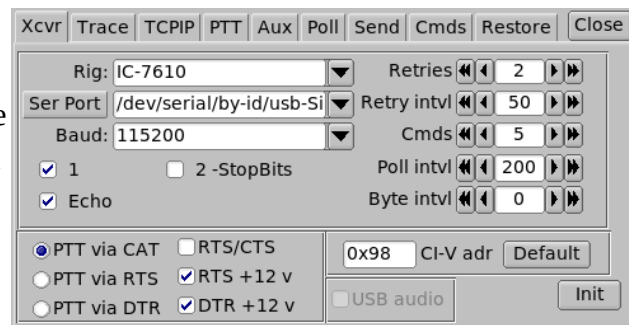
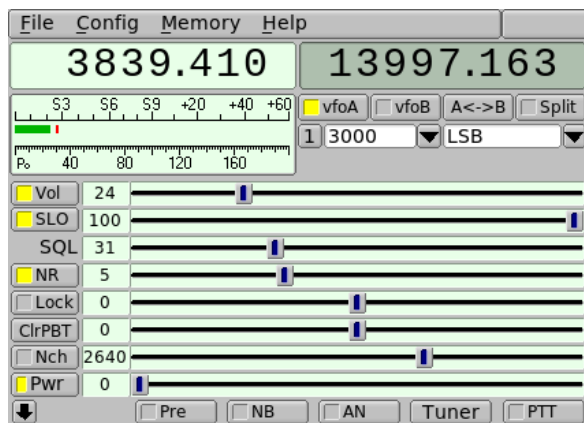
By default, *fldigi* stores configuration info in the directory `~/fldigi` and *flrig* stores configuration info in the directory `~/flrig`<sup>1</sup>. To add a another rig we open a terminal window and create two new configuration directories<sup>2</sup>:

```
$ mkdir .fldigi-7610 .flrig-7610
```

We begin by configuring *flrig* using the `.flrig-7610` directory to store the configuration. In a terminal window type :

```
$ flrig --config-dir .flrig-7610
```

In the **Xcvr** tab select the rig and configure as you would if it was the only rig you have. (Consult the web and fellow club members for help if you need it.)



If your settings are correct, pressing **Init** will bring up controls for your rig. (See figure at left.)

Press the **PTT** button and verify that your rig goes into transmit mode.

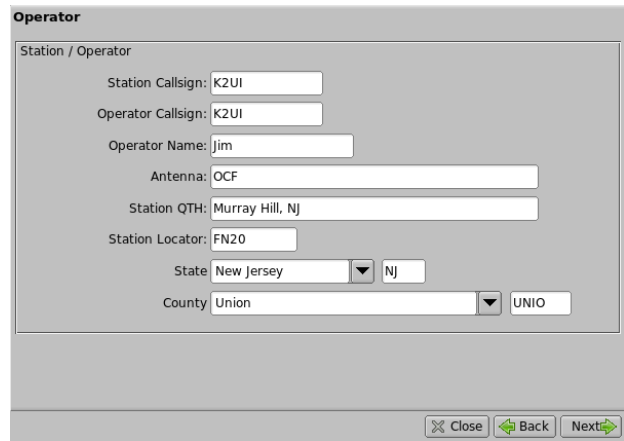
Exit *flrig* and it will write the configuration preferences to the directory `.flrig-7610`.

- 1 Remember, `~` is an abbreviation for the home directory `/home/pi`.
- 2 Pick directory names that incorporate the name of the rig they apply to.

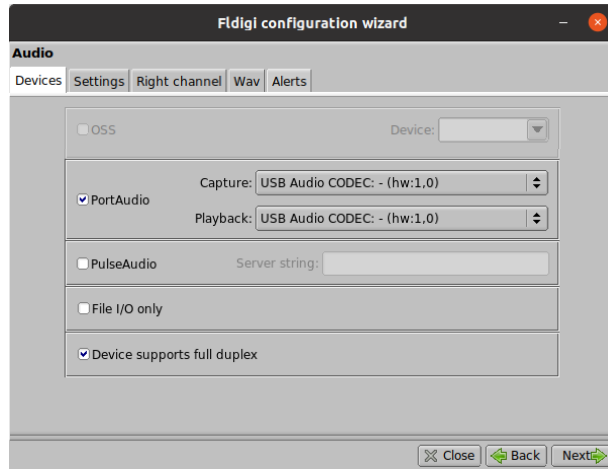
Now it is time to setup *fldigi*. Type the following command into a terminal window:

```
$ fldigi --config-dir .fldigi-7610
```

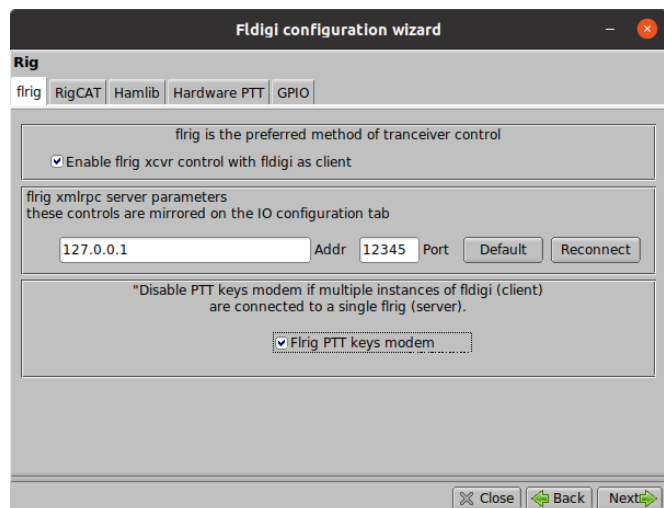
When *fldigi* opens, you will be forced to enter configuration information. Click **Next** and enter your operator info. =====>



<===== Click **Next** again and select the sound card(s) handling the audio to/from your rig.



Click **Next** again and select *flrig* for transceiver control. =====>



Step through the other configuration menus and click **Finish** when you are done.

Once you finish the mandatory configuration items, the main *fldigi* screen will open. Now we will configure *fldigi* to automatically start *flrig* so that it uses the configuration directory we setup above.

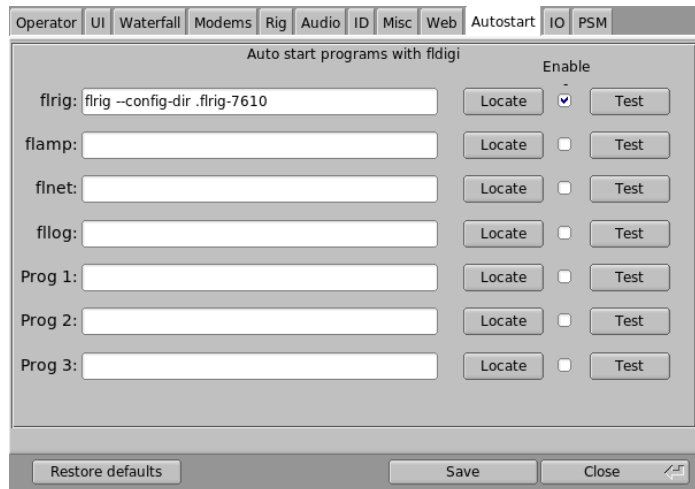
Select **Configure**⇒**Rig Control**⇒**Autostart**

In the *flrig* slot enter:

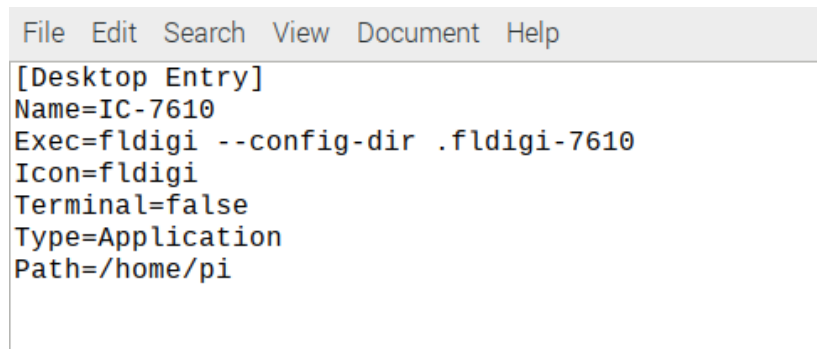
```
flrig --config-dir .flrig-7610
```

and check the Enable checkbox.

Finally click **Save** and **Close**.



The last step is to create a Desktop icon to fire off *fldigi* (and *flrig*) when it is selected. In the Desktop directory use a text editor to create a file (Fldigi-7610 in my case) that will become the clickable icon.

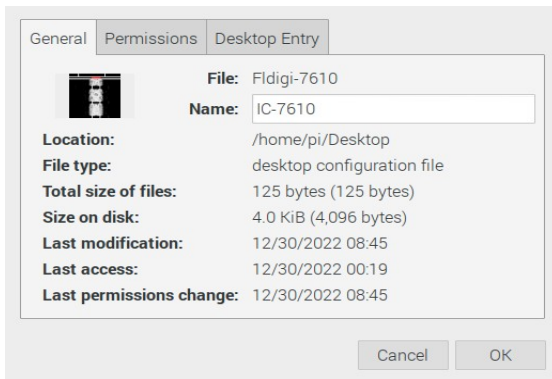


Note the following:

- Name= defines the label under the icon on the desktop.
- Exec= defines the program and options that will be executed when the icon is clicked. It is identical to the command entered in the terminal window to configure *fldigi*.
- Path= specifies the directory where *fldigi* will be executed.

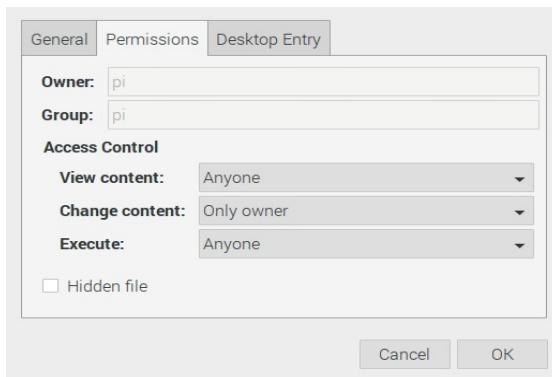
When the icon first appears on the Desktop it will be labeled with the filename. It will not have the label defined by Name= until the the next login.

Right click on the new icon and select properties. You should see the the following tabs ...

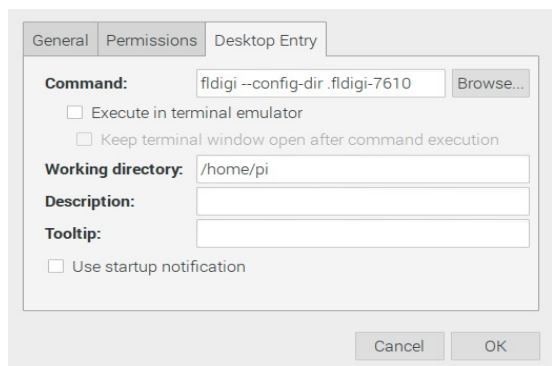


General information about the desktop file includes the names of the file and icon label.

If you started with an *fldigi* desktop file that was working with your old rig you can use this properties tab to give it a label identifying it.



Permissions should be set as shown on the left.



The Desktop Entry tab shows the command that will be executed when the icon is clicked. It should match the `Exec=` field in the desktop file. The working directory is as specified in the `Path=` field in the desktop file.

At this point the desktop icon can be used to fire off *fldigi* with the new rig.

### Caveats and Tips

- If your rig provides an internal USB sound card, starting *fldigi* with the rig off or the USB cable unplugged will likely break the sound card configuration leaving *fldigi* configured for the default analog audio.
- The above situation will also break the *flrig* configuration, leaving the Serial Port set to NONE.
- With the configuration described here, *fldigi* starts *flrig* automatically. But exiting *fldigi* does not terminate *flrig* so you will need to exit both programs separately.